



WELCOME TO SHWARI COTTAGES

“THE PEACEFUL PLACE”

Shwari Cottages are situated in the Great Rift Valley between Mt. Longonot and Lake Naivasha. There are 4 cottages in a 3 acre compound surrounded by 800 acres of ranch land. The homes also border one of the largest ranches in Kenya called Kedong Ranch.

This gives the area a great, open and peaceful feel.



ACCOMODATION

The 4 cottages consist of 3 bedrooms and 2 bathrooms. The master bed room has a king- size bed with an ensuite bathroom; the two guest rooms share a bathroom and have a queen size bed and two single beds. The kitchen is open plan leading to the large living room with fireplace. The dining table seats 6 people. All houses have spectacular views of the lake as well as Mt. Longonot. Water is pressurized and each house has a 300L solar hot water tank.

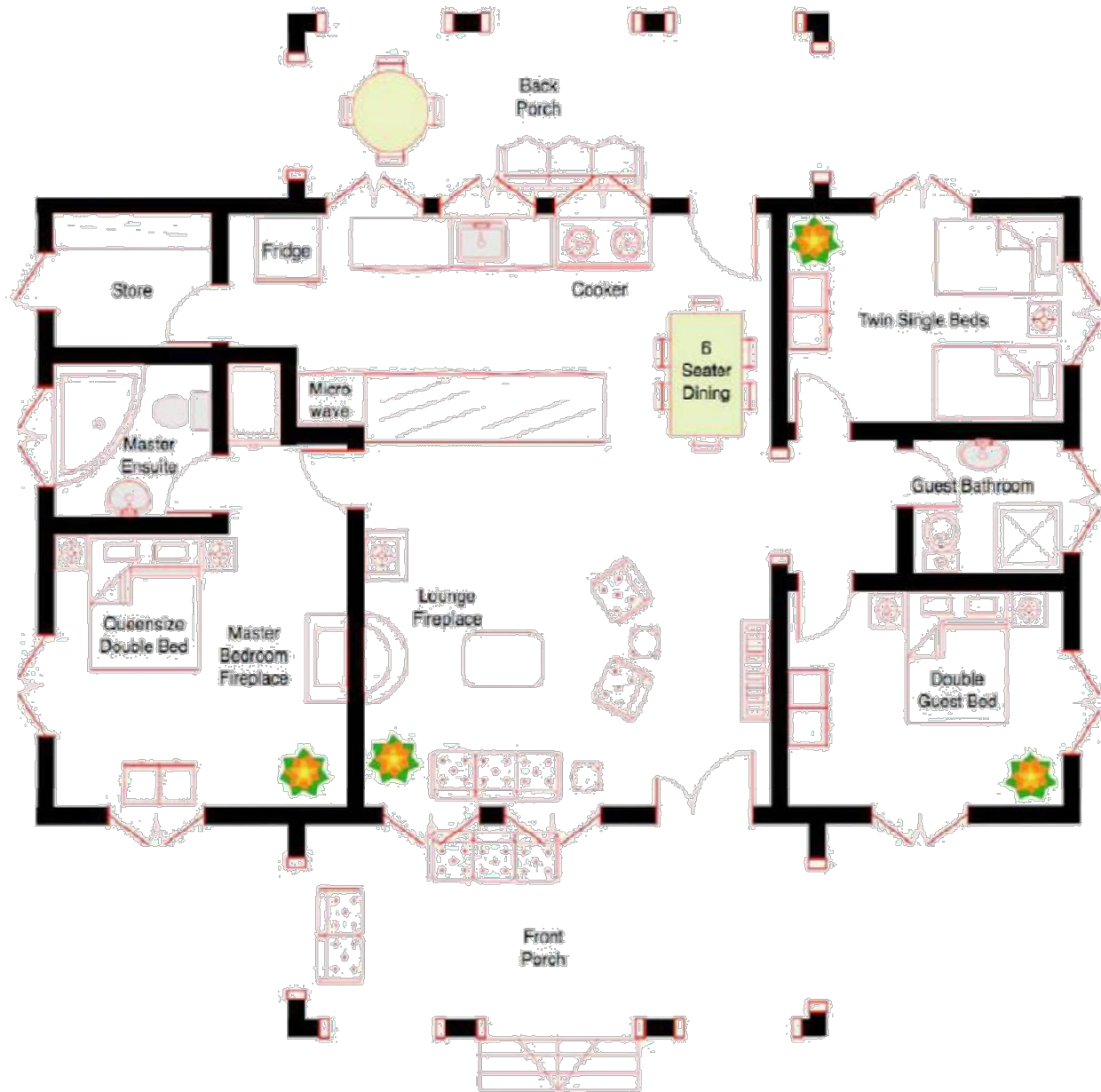


There is a swimming pool located between all the houses. Made out of local materials and finished with mazeras stone, it blends into the landscape. From the pool you get views of the lake and the mountain. Perfect for sundowners!



Shwari employs 4 full time staff who take care of the property. There is 1 night guard who patrols the compound. There is also an electric fence which is turned on at night. Staff who can help with simple cooking and cleaning are available upon request.

Shwari House Floorpan



COTTAGE 1 : BAM BAMS BEDROCK



COTTAGE 1 : BAM BAMS BEDROCK



COTTAGE 2 : WILMAS BEDROCK



COTTAGE 2 : WILMAS BEDROCK



COTTAGE 3 : FRED'S BEDROCK



COTTAGE 3 : FRED'S BEDROCK

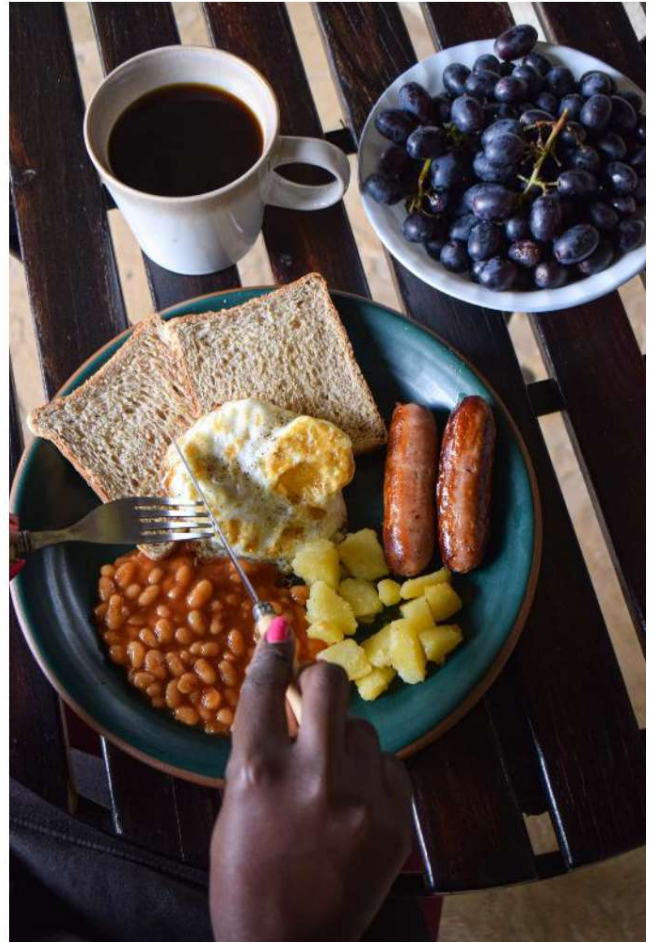


COTTAGE 4 : BARNEY'S BEDROCK



COTTAGE 4 : BARNEY'S BEDROCK





ACTIVITIES IN THE AREA

There are lots of activities available in the area.
Here is a list of must do's:

- Climb Mt. Longonot (1/2 day trip)
- Boat ride on Lake Naivasha
- Visit Crescent Island (Sanctuary farm 0722 761 940)
- Horse riding – available at Sanctuary Farm
- Bike riding at Hells Gate National Park
- Gorge walk at Hells Gate National Park
- Swim in the natural SPA at Hells Gate National Park
- Rock climbing at Fischers tower at Hells Gate National Park
- Pizza lunch at Camp Carnelly's (0722 260749 / 0715 209931)
- Visit Lake Nakuru National Park (just over one hour by car)
- Naivasha Owl Center (0723 786007)
- Sit on your verandah at Shwari and view the wildlife around you



AMENITIES

There are a few places along Moi South Lake Rd where the basic supplies are available. However, everything else is available in Naivsaha town in the 2 large supermarkets there. Here are some options if you get stuck:

- Fresh vegetables at Elementaita Weavers near Karaigita Village
- Better quality fresh vegetables at the Oserian Shop
- Milk, bread and other basics are available at Karaigita Village (in the local kiosks)
- Hotels close by are Sawela Lodge, Enashipai, Naivasha Sopa and Naivasha Simba
- Restaurants are Carnelly's, Fishermans and Enashipai Café

THINGS TO TAKE WITH YOU

- **Food/Drink for your stay.** Houses have fully equipped kitchens with all the common appliances like fridges/cookers/microwaves etc.
- **Firewood.** The nights do get cold and we do not encourage cutting of trees within the ranch.
- **Drinking water.** We have running water but it may not be suitable for drinking.
- **Charcoal.** This may be required if you plan to use the BBQ or Jiko.
- **Extra blankets.** It can get quite cold at night. If you need to, it may be wise to carry some extra blankets.
- **Towels.** Please bring your own towels for bath and pool use. We do not have a laundry facility so we do not provide towels yet.
- **Basic Toiletries.** Please bring personal items such as soap/shampoo/insect repellent etc.
- **Binoculars.** There are over 500 species of birds and many animals. You may want to have these with you at all times.
- **Sun Block.** The days can get extremely hot so please cover up.
- **Good walking/hiking shoes.**



USE OF HOUSES

- All the houses are equipped and furnished by their owners. Please take care while using the equipment and house.
- Any breakages will need to be paid for. Kindly inform the caretaker (Elema) if you have damaged or broken something.
- Please do not transfer things between houses. Each house has its own inventory and this must be maintained throughout your stay.
- The bed sheets, pillows and blankets are provided. They will be changed after your stay.
- In case you need anything, please speak to the caretaker and he will assist you.

CAUTION

Shwari is situated out in the wild. The owners and management do not take any responsibility or liability for your stay and use of the premises and surrounding area. Please respect the wildlife and be careful walking about, especially outside the Shwari compound.

There have been recent sightings of leopard, hyena, buffalo and python in the area. Please do not leave the compound without talking to the askari. The buffalo, especially, have been known to attack people walking through so please be careful.

Wear shoes when walking about the compound- we have lots of acacia trees which shed thorns.

ENJOY YOUR STAY!



MAP and DIRECTIONS TO SHWARI

1. Follow either Mahi Mahi road or new road to Naivasha.
2. Turn into Moi South Lake Rd. (sign for lodges)
3. Follow for 6.9Km to 'Longonot Gates' and 'the SIRWA' signboards on left hand side of road (pass sanctuary farm on right). Soon after sanctuary farm take a left here onto murram road at the Longonot Gates and the SIRWA sign.
4. Follow murram road for APPROX. 5Km (which bends to the right (after Inca homes) after about 2 kms) and you will reach green gate on right with second sign saying SHWARI inside the gate.
5. Turn in and follow road down (you will see a small sign saying 'SHWARI' – here road turns quick right and then quick left) leading you to the bottom of ranch to third sign of Shwari. YOU ARE THERE.

